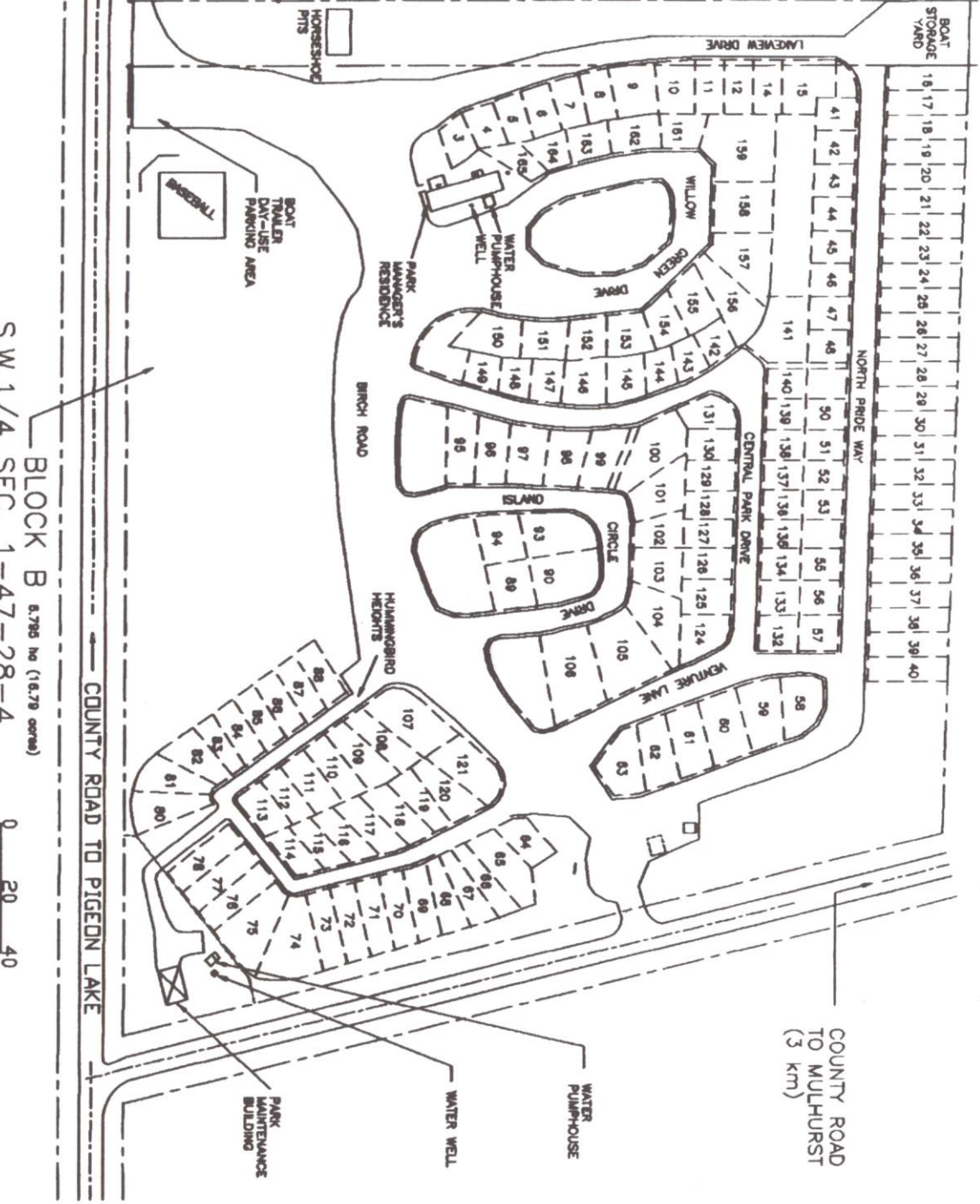
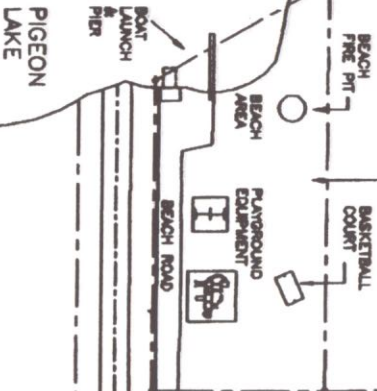




BLOCK C 0.437 ha (1.08 acres)
S.E.1/4
SEC. 2-47-28-4



BBTA

BLOCK B 8.786 ha (18.78 acres)
S.W.1/4 SEC. 1-47-28-4
PLAN 4497 RS



Burnt Birch Trailer Association

14 JAN 2005
DRWG. SP-101 REV. 7

COUNTY ROAD TO MULHURST
(3 km)

COUNTY ROAD TO PIGEON LAKE

PIGEON LAKE